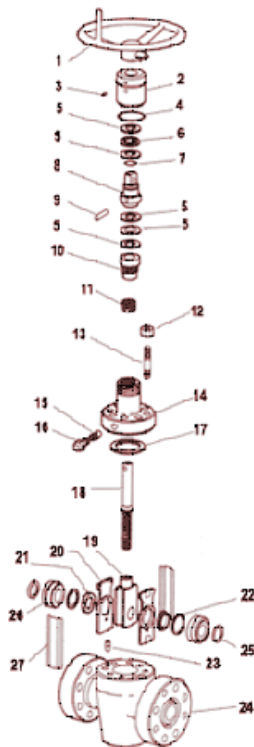




Protective Supplies &
Procurement Services

“SIMPLIFY YOUR SUPPLY CHAIN”

Cameron Gate Valves Model F & FC 1-13/16" 10-15,000 PSI



Description	1-13/16" 10,000	1-13/16" 10,000	1-13/16" 15,000	1-13/16" 15,000
Trim	Stainless Steel	Super Trim	Stainless Steel	Super Trim
1. Hand Wheel	19937-01	19937-01	19337-03	19337-03
2. Bearing Cap	19106-01	19106-01	19106-01	19106-01
3. Grease Fitting	5929-05	5929-05	5929-05	5929-05
4. O-Ring	6227-43-38-50	6227-43-38-50	6227-43-38-50	6227-43-38-50
5. Bearing Race	19108-01	19108-01	19108-01	19108-01
6. Thrust Bearing	5931-09	5931-09	5931-09	5931-09
7. O-Ring	6227-27-01-70	6227-27-01-70	6227-27-01-70	6227-27-01-70
8. Stem Adapter	20871-01	20871-01	20871-01	20871-01
9. Stem Pin	21812-14	21812-14	21812-14	21812-14
10. Packing Gland	20874-01	20874-01	20874-01	690162
			666852-01	691889-01
11. Stem Packing	23678-01	686598-01	691889-01	691889-01
12. Nut	5926-25-10	5926-25-10	5926-23-10	5926-23-10
13. Stud	5914-21-10	5914-21-10	5915-25-10	5915-25-10
14. Bonnet	33297-02-01	33297-02-01	33297-03-01	33297-03-01
15. Check Valve	19776-01	678627-01-99	19776-01	678627-01
16. Grease Fitting	5929-25	5929-25	5929-25	5929-25
(F)	19141-06	19141-06	19141-06	19141-06
17. Bonnet Gasket)	(FC) 44671-01	44671-01	44671-01	44671-01
*, Gate & Seat Assy.	21353-17-02	21353-17-16	21353-17-03	21353-17-16
18. Stem	19285-01	29381-01-99	19285-01	29381-01-99
*19. Gate	19797-03	23039-02	19797-02	23039-02
*20. Retainer Plate	611404-09	611404-09	611404-09	611404-09
*21. Seat Ring	611527-01	611527-01	611527-01	611527-01
*22. Seal Ring	610500-49	610500-49	610500-49	610500-49
23. Pin				
24. Body	44651-01	44651-01	44648-01	44648-01
**, Name Plate	19052-01	19052-01	19052-01	19052-01
25. Seal Ring	610500-49	610500-49	610500-49	610500-49
26. Body Bushing	630693-02	630693-02	630693-02	630693-02
27. Guide	44646-01	44646-01	44646-01	44646-01